

- NOTES:**
1. REMOVE EXISTING RIPRAP PRIOR TO EXCAVATION. REPLACE RIPRAP AFTER COMPLETION OF BACKFILLING AND GRADING.
 2. CONTRACTOR MAY INCREASE THE LENGTH, SIZE, AND STRENGTH OF THE PERMANENT SCOUR PROTECTION PILES TO PROVIDE WATER CUTOFF FOR CONSTRUCTION.
 3. FOR PLANTING LEGEND AND NOTES SEE SHEET D-1 AND D-2.

LEGEND:

⊙ TEST BORING LOCATION (w/ NUMBER)

YAKIMA RIVER



CH2M HILL

THE CONTRACT DOCUMENTS, DRAWINGS AND THE PERMITS DOCUMENTS GOVERN OVER ALL. IT IS SOLEMNLY MANDATED AND THE CONTRACTOR SHALL BE RESPONSIBLE FOR OBTAINING ALL NECESSARY PERMITS AND APPROVALS FROM THE APPROPRIATE AGENCIES. THE CONTRACTOR SHALL BE RESPONSIBLE FOR OBTAINING ALL NECESSARY PERMITS AND APPROVALS FROM THE APPROPRIATE AGENCIES. THE CONTRACTOR SHALL BE RESPONSIBLE FOR OBTAINING ALL NECESSARY PERMITS AND APPROVALS FROM THE APPROPRIATE AGENCIES.

RECORD DRAWINGS

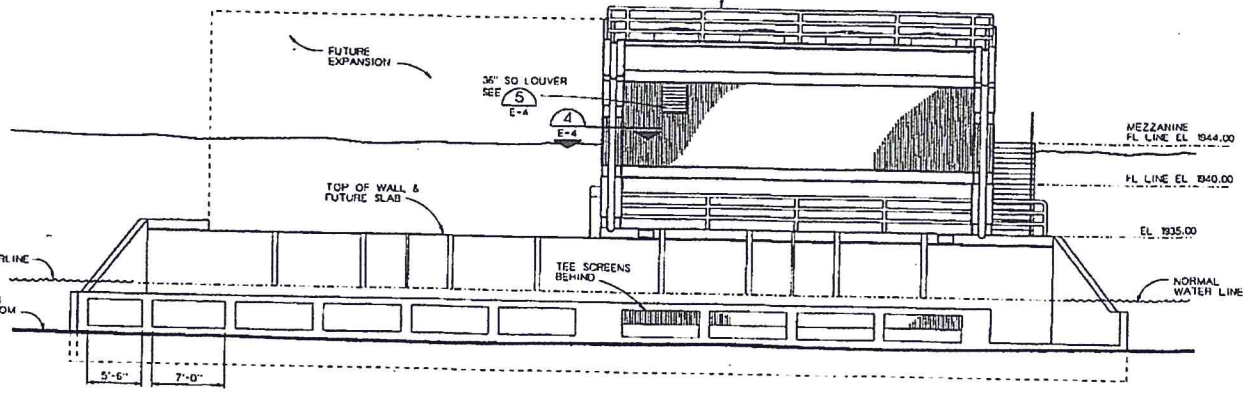
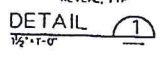
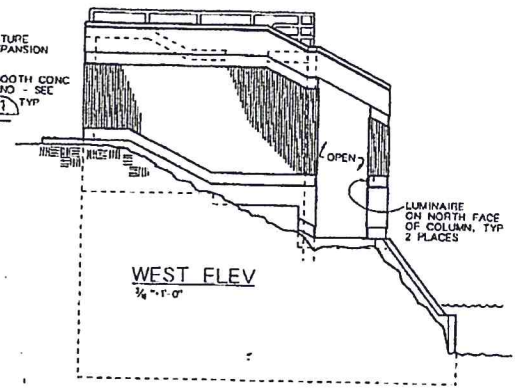
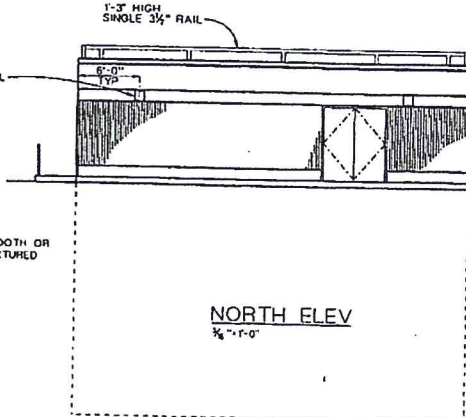
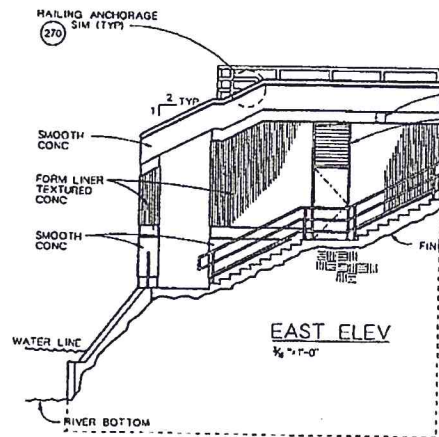
Revisions Drawn By: G. ALMSTROM Date: September, 1998

THESE RECORD DRAWINGS HAVE BEEN PREPARED, IN PART, ON THE BASIS OF INFORMATION SUPPLIED BY OTHERS. THEY ARE NOT INTENDED TO REPRESENT IN DETAIL THE EXACT LOCATION, TYPE, OR CHARACTERISTICS OF ANY STRUCTURE OR EQUIPMENT. THE ENGINEER WILL NOT BE RESPONSIBLE FOR ANY ERRORS OR OMISSIONS WHICH HAVE BEEN INCORPORATED INTO THE RECORD DRAWINGS.

1	C	PL	CONFORMING TO ALL AMENDMENTS TO SOLICITATION 98R010009	BUM	5/98	RFK	KMP
ND	C	PL	COMPUTER REVISION ONLY				APPROVED
C-CONTRACTOR FAVORABLE ACCOUNT CONSTR. RECORD FILE NAME: 2213131010							
Design: J. FARRILL							
Drawn: J. WAT							
Check: J. FARRILL							
Sub: J. CATION							
Checked by ENGINEERING SERVICES							
 KEITH M. ROBERTS PROJECT MANAGER DATE: FEBRUARY 16, 1998							
183075				EDM		1 OF 9	

UNITED STATES DEPARTMENT OF ENERGY
 BONNEVILLE POWER ADMINISTRATION
 RECONSTRUCTION PROGRAMS DIVISION
 YAKIMA FISHERIES PROJECT
 CLE ELUM HATCHERY
 RIVER PUMP STATION
 SITE PLAN

E-1



CODE NOTES

APPLICABLE CODES: 1994 UBC
1994 LFC

1. TYPE OF OCCUPANCY: S-2
2. TYPE OF CONSTRUCTION: V-N
3. NUMBER OF STORIES: 1, < 40' HIGH
4. FLOOR AREA:
ALLOWABLE: 12,000SF + 12,000SF
ACTUAL: 738 SF
5. SPRINKLER SYSTEM: NOT REQUIRED
6. LOCATION ON PROPERTY: 0 HOUR >20'

- NOTES**
1. FOR ARCH "GENERAL NOTES" SEE SHEET T-1, FOR STRUCTURAL GENERAL NOTES SEE (200)
 2. FOR "DOOR SCHEDULE" SEE SPECIFICATION SECTION 0800.
 3. FOR "FINISH SCHEDULE" SEE SPECIFICATION SECTION 0900.
 4. FOR "ABBREVIATIONS" SEE SHEET A-4.
 5. FOR "ARCHITECTURAL LEGEND" AND "MATERIAL SYMBOLS," SEE SHEET A-3.
 6. FOR "LOUVER SCHEDULE" SEE SPECIFICATION SECTION 1200.
 7. FOR SIGNAGE (11-1) SEE SIGN SCHEDULE IN SPECIFICATION SECTION 1300.

RECORD DRAWINGS
 Revisions Drawn By: G. ALMSTROM Date: September, 1998
 THESE RECORD DRAWINGS HAVE BEEN PREPARED IN PART, ON THE BASIS OF INFORMATION CONTAINED BY OTHERS, THEY ARE NOT PROVIDED TO REPRESENT OR IN THE LEAST, LOCATION, TYPE OF FOUNDATION, HOW MANNER OF CONSTRUCTION, THE ENGINEER WILL NOT BE RESPONSIBLE FOR ANY ERRORS OR OMISSIONS WHICH HAVE BEEN INCORPORATED INTO THE RECORD DRAWINGS.

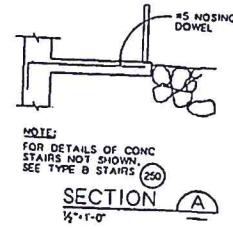
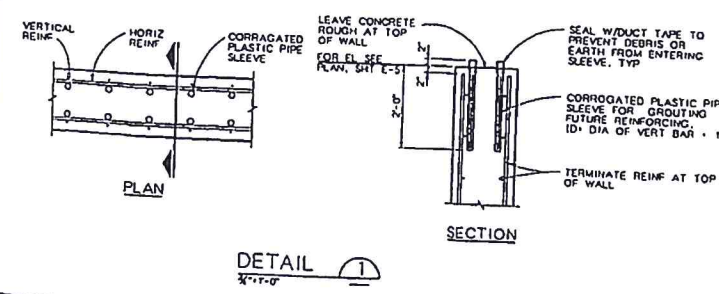
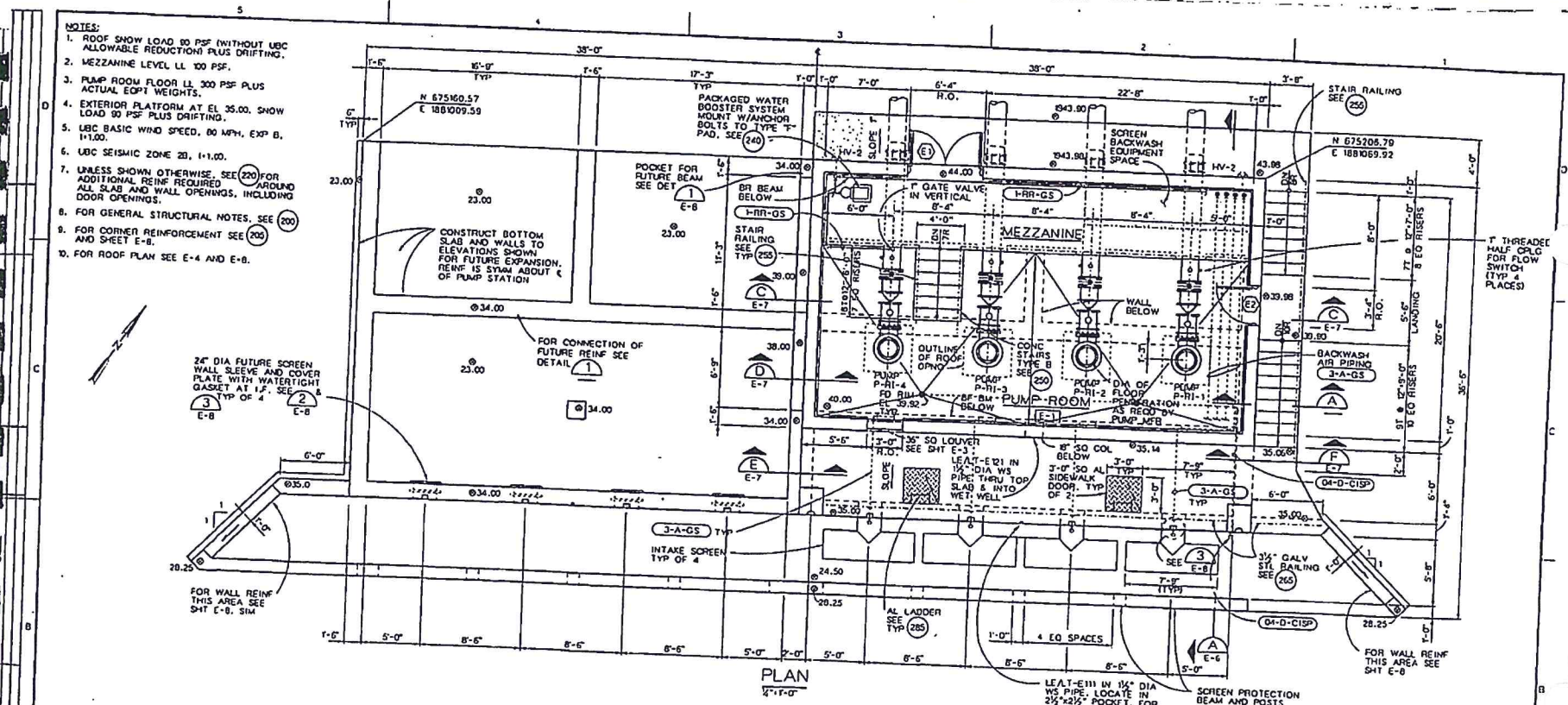
1. THE CONTRACT DOCUMENTS, Drawings and the other instruments of service shall govern in the absence of any conflict.
2. ALL SUBMITTALS SHALL BE MADE TO THE ARCHITECT AND SHALL BE ACCOMPANIED BY THE APPROPRIATE SCHEDULES AND SPECIFICATIONS.
3. THE CONTRACTOR SHALL BE RESPONSIBLE FOR OBTAINING ALL NECESSARY PERMITS AND APPROVALS FROM THE LOCAL, STATE AND FEDERAL AGENCIES.
4. THE CONTRACTOR SHALL BE RESPONSIBLE FOR OBTAINING ALL NECESSARY PERMITS AND APPROVALS FROM THE LOCAL, STATE AND FEDERAL AGENCIES.
5. THE CONTRACTOR SHALL BE RESPONSIBLE FOR OBTAINING ALL NECESSARY PERMITS AND APPROVALS FROM THE LOCAL, STATE AND FEDERAL AGENCIES.



NO. C-11-1	DATE	COMPUTER REVISION ONLY	BY	DATE	APPROVED
C-CONTRACT COVER, FAVORABLE ACCOUNT CONST. & RECORDS SEE PAGE 27131303.00					
Design	J. MURPHY	UNITED STATES DEPARTMENT OF ENERGY			
Drawn	J. STEPHEN	BONNEVILLE POWER ADMINISTRATION			
Check	J. STEPHEN	HEADQUARTERS, PORTLAND, OREGON			
Scale	H. GATCHEL	YAKIMA FISHERIES PROJECT			
CLE ELUM HATCHERY					
RIVER PUMP STATION					
ARCHITECTURAL ELEVATIONS					
APPROVED BY ENGINEERING SERVICE					
SEE SHEET T-1 FOR "GENERAL NOTES"					
IF NOT ONE WITH ON THIS SHEET, SCALE ACCORDINGLY.					
DATE	SEPTEMBER 18, 1998	SCALE	183075	SOURCE	EDM C 3 of 9 0

E-3

- NOTES:
1. ROOF SHOW LOAD 80 PSF (WITHOUT UBC ALLOWABLE REDUCTIONS) PLUS DRIFTING.
 2. MEZZANINE LEVEL LL 100 PSF.
 3. PUMP ROOM FLOOR LL 300 PSF PLUS ACTUAL EQPT WEIGHTS.
 4. EXTERIOR PLATFORM AT EL 35.00. SHOW LOAD 90 PSF PLUS DRIFTING.
 5. UBC BASIC WIND SPEED, 80 MPH, EXP B, I-1.00.
 6. UBC SEISMIC ZONE 2B, I-1.00.
 7. UNLESS SHOWN OTHERWISE, SEE (200) FOR ADDITIONAL REINF REQUIRED AROUND ALL SLAB AND WALL OPENINGS, INCLUDING DOOR OPENINGS.
 8. FOR GENERAL STRUCTURAL NOTES, SEE (200)
 9. FOR CORNER REINFORCEMENT SEE (200) AND SHEET E-8.
 10. FOR ROOF PLAN SEE E-4 AND E-8.

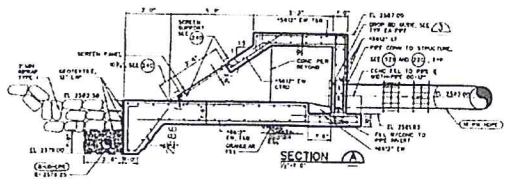
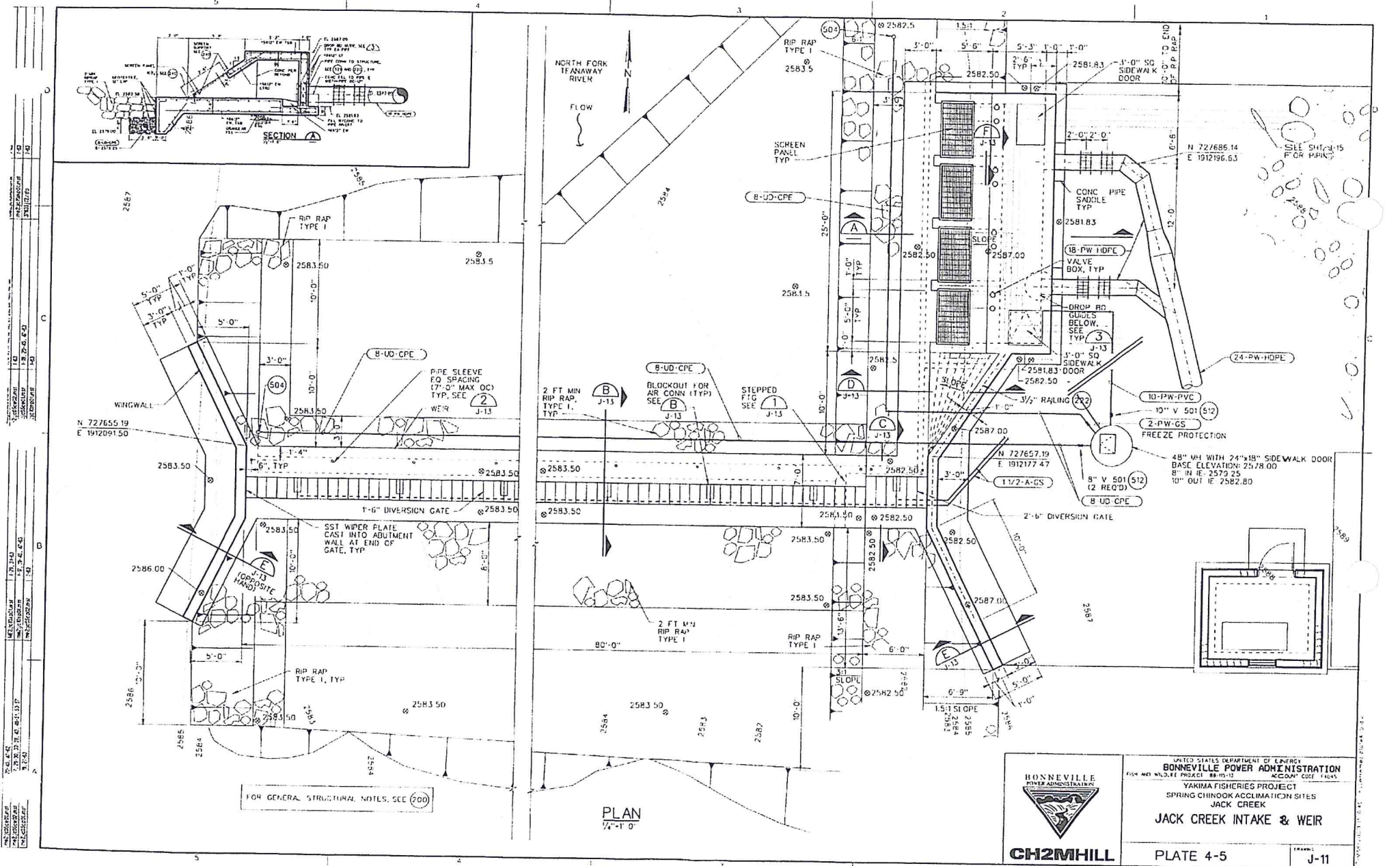


RECORD DRAWINGS
 Revisions Drawn By: G. ALMSTROM Date: September, 1998
 THESE RECORD DRAWINGS HAVE BEEN PREPARED BY MEET OR NOT INTENDED TO REPRESENT IN DESIGN THE EXACT LOCATION, DIMENSIONS WHICH HAVE BEEN INCORPORATED INTO THE RECORD DRAWINGS.

NO.	DATE	BY	DATE	APPROVED
1	12-15-98	J.M.W.		

E-COMTRACT CONSIDER FAVORABLE ACCOUNT COSTS, & RECORD FILE NO. 1713105-05.
 DESIGN: J.M.W.
 DRAWN: J.M.W.
 CHECK: J.M.W.
 SUB: B. GARDNER
 BONNEVILLE POWER ADMINISTRATION
 YAKIMA FISHERIES PROJECT
 CLE ELUM HATCHERY
 RIVER PUMP STATION
 MECHANICAL AND STRUCTURAL
 PUMP LEVEL PLAN E-5

DATE: FEBRUARY 1999
 SHEET NO: 183075
 OF: 5 OF 9



SHEET NO. 4-5
 DATE: 11/13/13
 DRAWN BY: J. J. B. / 11/13/13
 CHECKED BY: J. J. B. / 11/13/13
 PROJECT: JACK CREEK INTAKE & WEIR

FOR GENERAL STRUCTURAL NOTES, SEE 700

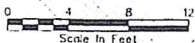
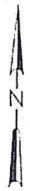
PLAN
1/4"=1'-0"



UNITED STATES DEPARTMENT OF ENERGY
BONNEVILLE POWER ADMINISTRATION
 YAKIMA FISHERIES PROJECT
 SPRING CHINOOK ACCLIMATION SITES
 JACK CREEK
JACK CREEK INTAKE & WEIR

PLATE 4-5

J-11



YAKIMA RIVER

FILL EXCAVATION WITH RIPRAP TYPE I

N 694884.32
E 1834396.79

INSULATED EQUIPMENT ENCLOSURE FOR BACKWASH PUMPING AND AIR SYSTEM SEE E-15

AIR CONDENSATE DRAIN VALVE

18-PW-HDPE

24-PW-HDPE

3-A-GS

1-A-GS

2'-8" SO SIDEWALK DOOR, TYP

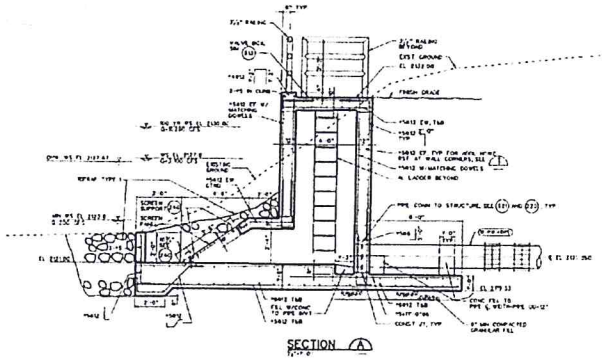
VALVE BOX TYP

AL LADDER BELLOW SEE (242) TYP

FILL EXCAVATION WITH RIPRAP TYPE I

N 694865.96
E 1834413.77

PLAN
7/21/07



GEOTEXTILE UNDER RIPRAP WITHIN DASHED AREA, BOTH SIDES OF STRUCTURE

5'-0" DEEP RIPRAP TYPE I ON SLOPE AND BASE

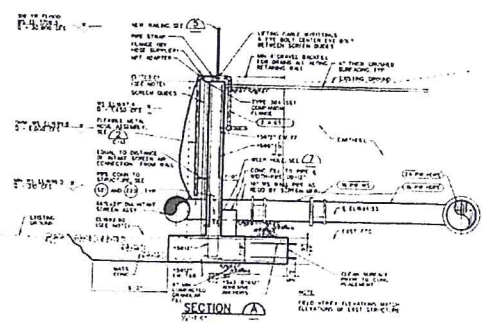
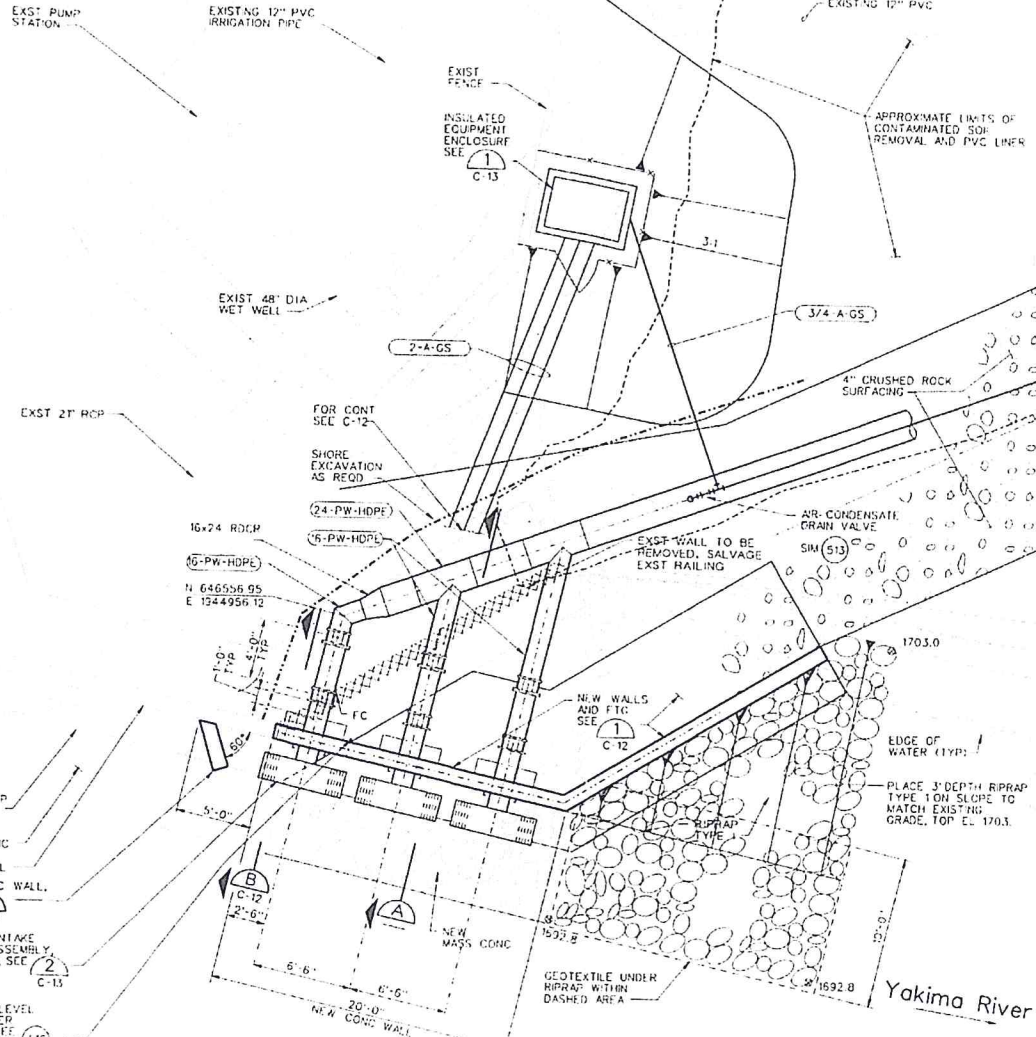
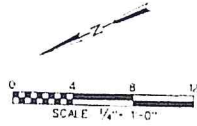


CH2MHILL


UNITED STATES DEPARTMENT OF ENERGY
BONNEVILLE POWER ADMINISTRATION
YAKIMA FISHERIES PROJECT - 18-10-12 ACCOUNT COST 14645
SPRING CHINOOK ACCLIMATION SITES
EASTON

PLATE 4-1

E-12



FOR GENERAL STRUCTURAL NOTES, SEE 200

 BONNEVILLE POWER ADMINISTRATION	UNITED STATES DEPARTMENT OF ENERGY BONNEVILLE POWER ADMINISTRATION <small>1521 MC ALCLIFF PROJECT 85-115-R ACCOUNT CODE 14041</small>	
	YAKIMA FISHERIES PROJECT SPRING CHINOOK ACCLIMATION SITES CLARK FLAT	
	CLARK FLAT INTAKE	
	PLATE 4-3	<small>ISSUED</small> C-11

SHEET NO. 4-3
 DATE: 10/15/85
 DRAWN BY: J. L. HARRIS
 CHECKED BY: J. L. HARRIS
 APPROVED BY: J. L. HARRIS
 PROJECT NO. 85-115-R
 ACCOUNT CODE 14041